

# BiPAP AVAPS

# BiPAP S/T



## Quick start guide

- Set up device
- Start therapy
- View information
- Comfort settings
- Undocking
- Humidification
- Humidifier settings

**PHILIPS**

RESPIRONICS

# Set up device

Therapy	Comfort
Info	Setup

## To access provider settings:

1. From the main menu, highlight **Setup**.
2. Press and hold ramp button and control wheel simultaneously for 4-5 seconds until beep.
3. Provider **Setup** screen then appears.

Setup	Back	
	Mode	S/T
	AVAPS	Off
	IPAP	12.0

## To program device:

1. Turn control wheel to specific setting and press.
2. Turn control wheel to desired option and press control wheel to select.
3. Turn control wheel to next setting and repeat.
4. To exit, turn control wheel to **Back** and press.

Provider setup menu	
<b>Therapy settings</b>	
Mode	CPAP, S, S/T, T, PC
CPAP	4-20
AVAPS (not available on BiPAP S/T)	Yes, No
Vte	200-1500
IPAP max	40-25
IPAP min	4-25
IPAP	4-25
EPAP	4 to IPAP
BPM	0-30
Ti	0.5-3.0
<b>Comfort settings</b>	
Flex control	Yes, No
Flex setting	Off, 1, 2, 3
Rise time control	Yes, No
Rise time	1-3
Ramp	0-45 min
Ramp start	4 to EPAP

## Provider setup menu (cont.)

### Alarm settings

Apnea	0, 10, 20, 30 sec
Patient disconnect	0, 15, 60 sec
Low min vent	0 (off) to 99 lpm in 1.0 increments
Low Vte	0 (off) 1 (on)

### System settings

Backlight	On, Off
Language	English, Italian, Spanish, German, French, icons
hPa/cm H <sub>2</sub> O	hPa, cm H <sub>2</sub> O
Setup parameter display <sup>1</sup>	Leak, RR, Vm, Vte
Humidifier	0 to 5
Reset blower hours	Yes, No
Provider mode <sup>2</sup>	On, Off

#### 1. Setup parameter display

You can select which measured parameters will display on the Monitor Pressure screen. Choose from **Leak**, **RR** (Respiratory Rate), **Min vent**, or **Vte**. See the Measured Parameter section of the User Manual for more information.

#### 2. Provider mode

You can choose “**on**” or “**off**” to enable or disable provider mode. Selecting “**on**” will put the device in provider mode (and the device will not automatically return to patient mode when the screen times out or you select the Back option). Selecting “**no**” keeps the device in patient mode.

# Start therapy

Therapy	Comfort
Info	Setup

1. From the main menu, turn the control wheel to **Therapy** and press.
2. The monitoring screen will be displayed and the device will start.

**Note:** You can select the measured parameter to display on the **Monitor Pressure** screen. Choose from Leak, RR, MinVent, or Vte.

AVAPS	A	
S/T	4.0 cmH <sub>2</sub> O	
RR: 10 BPM		

# View information

Therapy	Comfort
Info	Setup

In provider screen:

1. Turn the control wheel to **Info** and press.
2. Turn the control wheel to desired option and press to view the information identified.
3. To exit out of any option, turn the control wheel to **Back** and press.

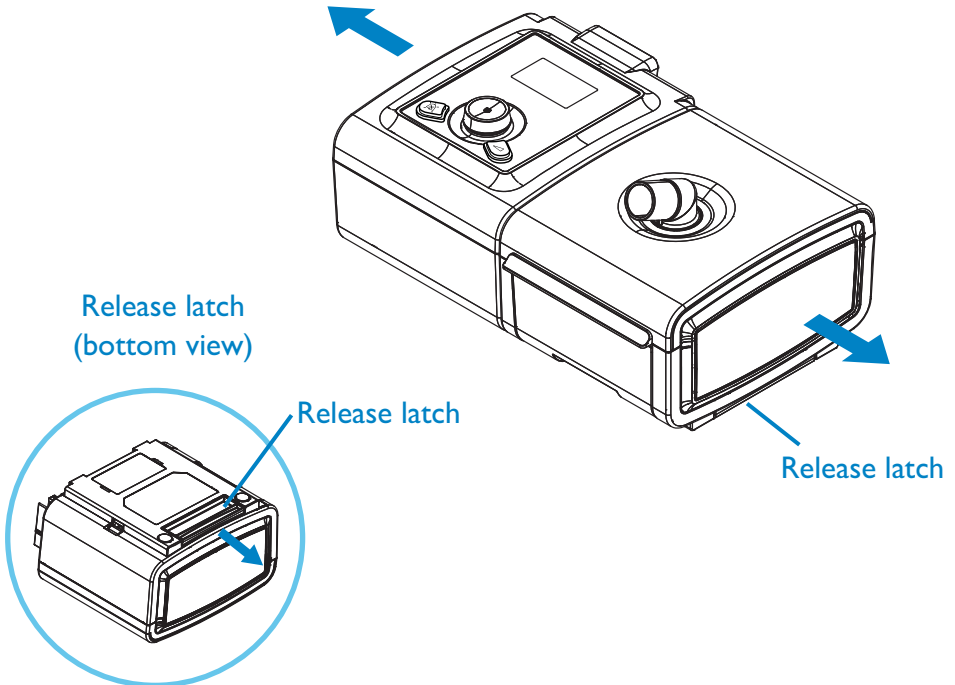
# Comfort settings

Therapy	Comfort
Info	Setup

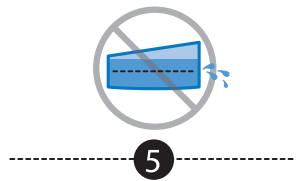
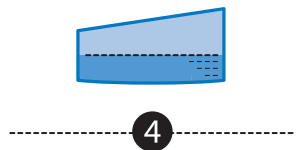
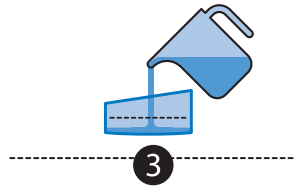
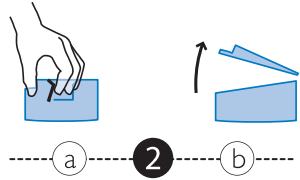
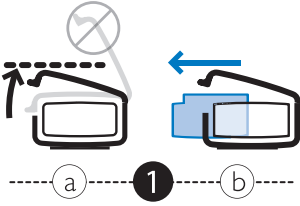
1. From the patient screen, highlight **Comfort**.  
The **Flex**, **Ramp**, and **Rise Time** comfort features will be shown in this menu selection if enabled.
2. Turn wheel to specific setting and press.
3. Turn control wheel to desired option and press to select.
4. To exit, turn control wheel to **Back** and press.

# Undocking

Refer to diagram below. Hold entire unit at each end and slide release latch to the right.



# Humidification

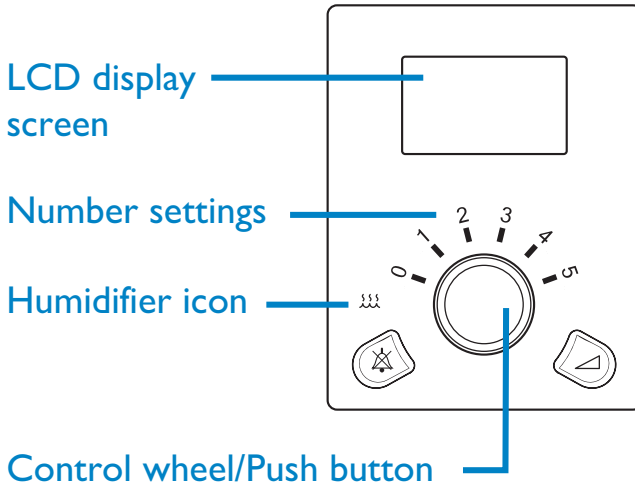


With device turned off, remove and fill chamber with water.

1. (a) Lift humidifier door until it locks in place. Do not force door higher than the locked position. (b) Grasp front of chamber and slide toward you.
2. (a) Gently push tab located inside round opening on top of chamber. (b) Separate top and bottom of chamber.
3. Fill bottom chamber with distilled water.
4. Observe maximum fill lines located on sides of chamber.
5. Do not overfill.

Reassemble the chamber by placing the hinges on lid over the two tabs on back of chamber. Close lid until it locks in place with an audible click. Insert filled chamber into humidifier.

# Humidifier settings



1. When blower is activated, the humidification icon and numerical setting will light up on the device.
2. Turn control wheel to adjust humidifier number to the desired setting (0 to 5) and press. The settings represent relative humidity levels that will remain consistent throughout the night even if room temperature changes.

**Philips Healthcare is part of  
Royal Philips Electronics**

**How to reach us**

www.philips.com/healthcare  
healthcare@philips.com  
fax: +31 40 27 64 887

**Asia**

+852 2821 5888

**Europe, Middle East, Africa**

+49 7031 463 2254

**Latin America**

+55 11 2125 0744

**North America**

+1 425 487 7000

800 285 5585

(toll free, US only)

Philips Respiration  
1010 Murry Ridge Lane  
Murrysville, PA 15668

Customer Service  
+1 724 387 4000  
800 345 6443  
(toll free, US only)

Respiration Asia Pacific  
+65 6298 1088

Respiration Australia  
+61 (2) 9666 4444

Respiration Deutschland  
+49 8152 93 06 0

Respiration Europe,  
Middle East, Africa  
+33 1 47 52 30 00

Respiration France  
+33 2 51 89 36 00

Respiration Italy  
+39 03 62 63 43 1

Respiration Sweden  
+46 8 120 45 900

Respiration Switzerland  
+41 6 27 45 17 50

Respiration United Kingdom  
+44 800 1300 845  
www.philips.com/respiration

Please visit [www.philips.com](http://www.philips.com)

Respiration, BiPAP and AVAPS are trademarks of Respiration, Inc. and its affiliates.  
All rights reserved.



© 2009 Koninklijke Philips Electronics N.V. All rights are reserved.

Philips Healthcare reserves the right to make changes in specifications and/or to discontinue any product at any time without notice or obligation and will not be liable for any consequences resulting from the use of this publication.

Geyer WMB 11/06/09 MCI 4102957 PN 1068822